

CDU 7.0

- 7.0" TFT Display
- Fully configurable display
- Fully configurable RGD LEDs
- Ultra slim aluminium casing
- 2000nit daylight readable



Image is for illustration purpose only

The Cosworth CDU 7.0 display offers a large display in an ultra slim package. This display offers market leading brightness of 2000nit, which means the display remains readable even in the brightest of environments. The display itself is fully configurable with a 800x480 QVGA, 16M colour TFT display which is driven over ethernet from a Cosworth device. The 6x side LEDs and 10x LEDs along the top are full RGB and can also be customised to the users requirements. As with all of the Cosworth CDU range, multiple displays can be daisy chained from a single Cosworth device making this range ideal for installations such as rally (driver and co-driver) and marine. All of this is packed into a aluminium IP66 rated enclosure which, is ultra slim measuring only 24mm thick.

Electrical Data

Operating Voltage	6 to 32V
Current Consumption	1128mA @ 13V
Operating Temp	-10°C to + 70°C
Storage Temp	-20°C to + 70°C

Communication

Ethernet	2x 100MB/S
----------	------------

Mechanical Data

Size	190.0 x 116.0 x 24.0 mm
Weight	650 grams
Environmental	IP66
Material	6802-T2 Anodized
Vibration	Cosworth DV-V(c)

Ordering Information

01D-640040	CDU 7.0
60D-640037	CDU 10.3 Bench Loom

Display Data

Screen	TFT LCD active matrix
Resolution	800 x 480 QVGA
Viewable Area	154.08 x 85.92mm
Contrast Ratio	500
Brightness	2000 nit
Display Colours	16.7M
Viewable Angle	D70 ° U 50° L&R 70°
LEDs	16x RGS LEDs

Compatible Devices

Badenia 2	01L-650078
Badenia 5	01L-650080
Centaurus 5	01I-610100
CLU	01L-650001
Antares	01E-501120
MQ12Di	01E-501085

Software Information

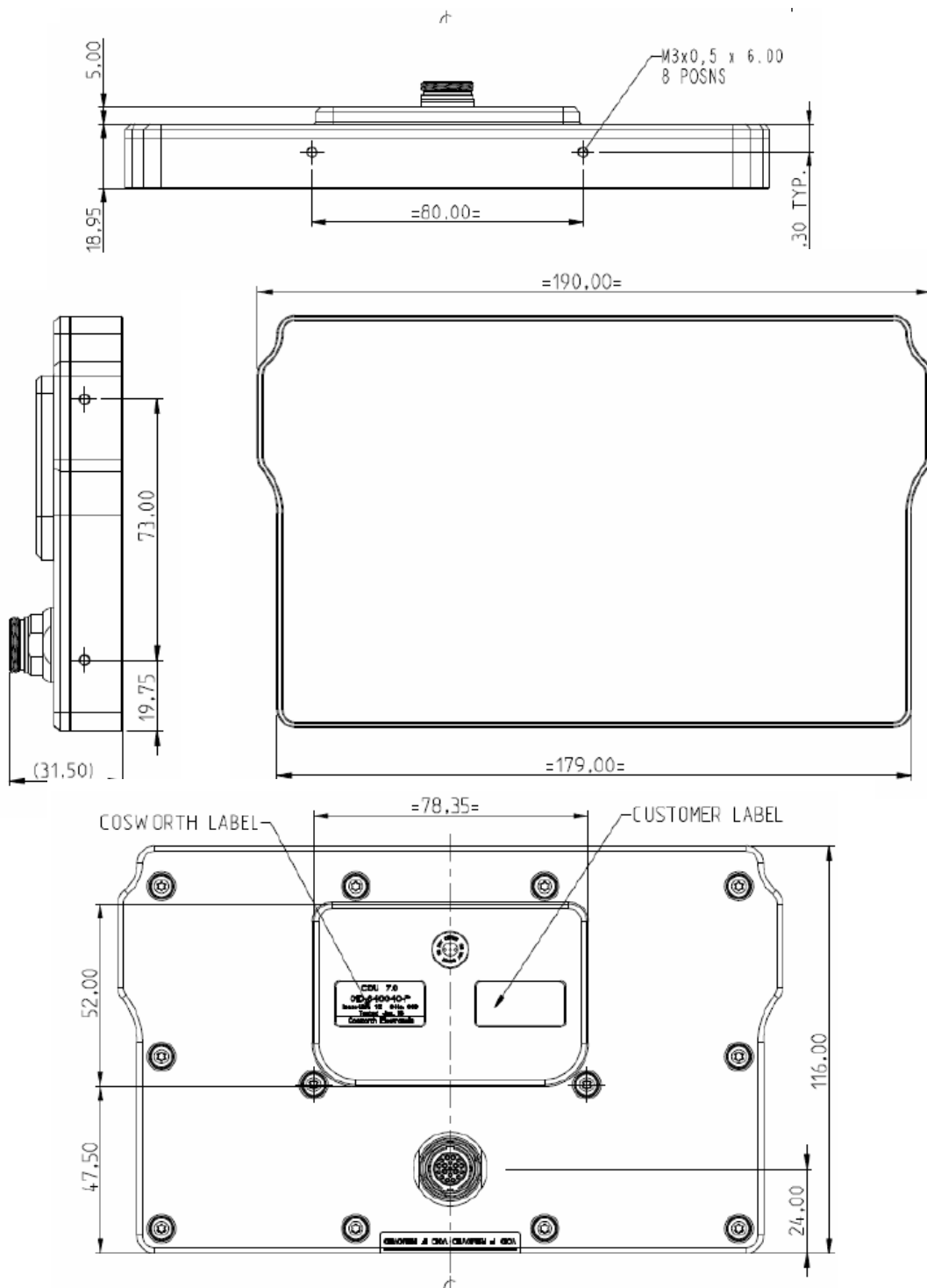


Pi Toolset

Configuration software for power control and logging

Document: 29D-640040	Template: CEL-TE012	Page 1
Rev: 1A	Doc Issue: 1	All Information in this document is correct as of 2020-08-27

DIMENSIONS



Installation

- Ensure unit is protected against severe vibrations by mounting using supplied AV mounting kit. Also ensure unit is not fouling other structures which may experience severe vibrations.
- Ensure unit is positioned in an area with sufficient cooling air flow to prevent over heating.
- Ensure unit is mounted away from sources of electrical interference
- Ensure unit is mounted in position where unit will not come into contact with water
- Ensure the case is connected via a ground connection point.

Document: 29D-640040	Template: CEL-TE012	Page 2
Rev: 1A	Doc Issue: 1	All Information in this document is correct as of 2020-08-27

Connector Information

Please note, pin allocation is in functional order not pin number order.

CN1

Connector	Mating Connector
HEN.2M.319.XLNP	FMN.2M.319.XLCT

Connector Information

Pin	CDU10.3	Description
1	TX+1	Ethernet 100BaseT TX1
12	TX-1	
2	RX+1	Ethernet 100BaseT RX1
13	RX-1	
4	TX+2	Ethernet 100BaseT TX2
15	TX-2	
5	RX+2	Ethernet 100BaseT RX2
6	RX-2	
7	RS232 RX	RS232 Serial comms receive data (external to CDU)
16	RS232 DX	RS232 Serial comms transmit data (CDU to external)
11	BATT+	Battery Supply
18	Gnd	Grounds
19	Gnd	
8	N/A	Not available
9	N/A	
10	N/A	
14	N/A	
17	N/A	

Document: 29D-640040	Template: CEL-TE012	Page 3
Rev: 1A	Doc Issue: 1	All Information in this document is correct as of 2020-08-27

Recycling and Environmental Protection

Cosworth Electronics is committed to conducting its business in an environmentally responsible manner and strives for high environmental standards.

- **Manufacture**
Cosworth products comply with the appropriate requirements of the Restriction of Hazardous Substance (RoHS)
- **Disposal**
Electronic equipment should be disposed of on accordance with the regulations in force and in particular on accordance with the Waste in Electrical and Electronic Equipment directive. (WEEE).

Document: 29D-640040	Template: CEL-TE012	Page 4
Rev: 1A	Doc Issue: 1	All Information in this document is correct as of 2020-08-27