

High Temperature Wheel Speed Sensor



Description

The wheel speed sensor is well suited for high temperature/harsh environments and is the ideal sensor for measuring shaft speeds and other tooth components. The sensor has better signal-to-noise ratio than variable reluctance sensors, excellent low speed performance, and output amplitude not dependant on RPM.

The sensor is supplied with a 1250mm loom terminated with an Autosport ASL606-05PD-HE connector.

Features

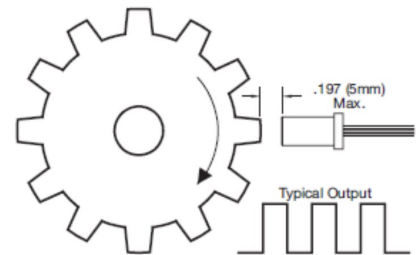
- Ferrous target sensing
- Protection against severe and automotive environments
- Self adjusting magnetic range
- Automotive grade circuit protection
- Short circuit and reverse voltage protection

Benefits

- No chopper delay
- Rotational alignment to target not critical
- Immune to target run out

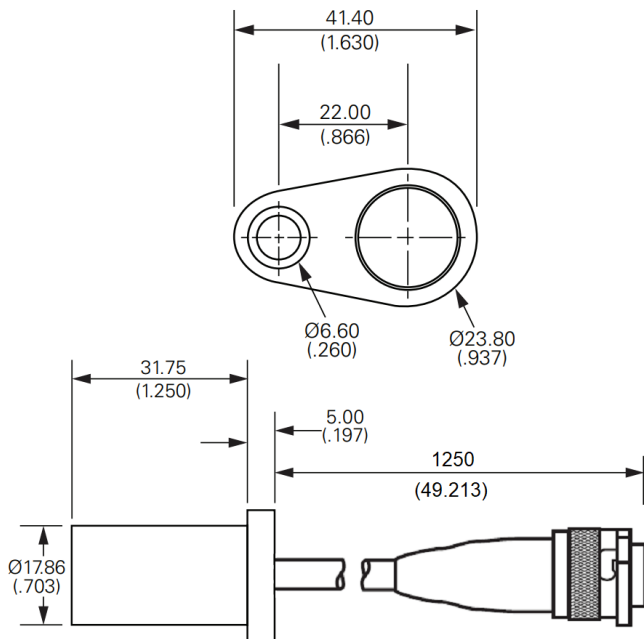
Applications

- Wheel, transmission and camshaft speed sensing



Dimensions

Dimensions in mm (inch)



Connector Information

Connector	Mating Connector
ASL606-05PD-HE	ASL106-05SD-HE

Pin	Description
1	Supply +Ve
2	Signal
3	Not connected
4	Not connected
5	GND

Description	Part Number
Wheel Speed Sensor (1250mm)	01S-630136-ASL

Electrical

Operating Voltage	4.75 to 24 V
Current Consumption	10.5 mA
Operating Temp	-40 to +125 °C
Max Switching Speed	15kHz

Mechanical

Mass	Less than 59g
Body	Nylon 35% Glass Filled, Heat Stabilised
Wiring	Spec 55 DR25 Sleeving
Connector	Aluminium with gold plated contacts

Recycling and Environmental Protection

Cosworth Electronics is committed to conducting its business in an environmentally responsible manner and strive for high environmental standards.

- **Manufacture**
Cosworth products comply with the appropriate requirements of the Restriction of Hazardous Substance (RoHS)
- **Disposal**
Electronic equipment should be disposed of on accordance with the regulations in force and in particular on accordance with the Waste in Electrical and Electronic Equipment directive. (WEEE).